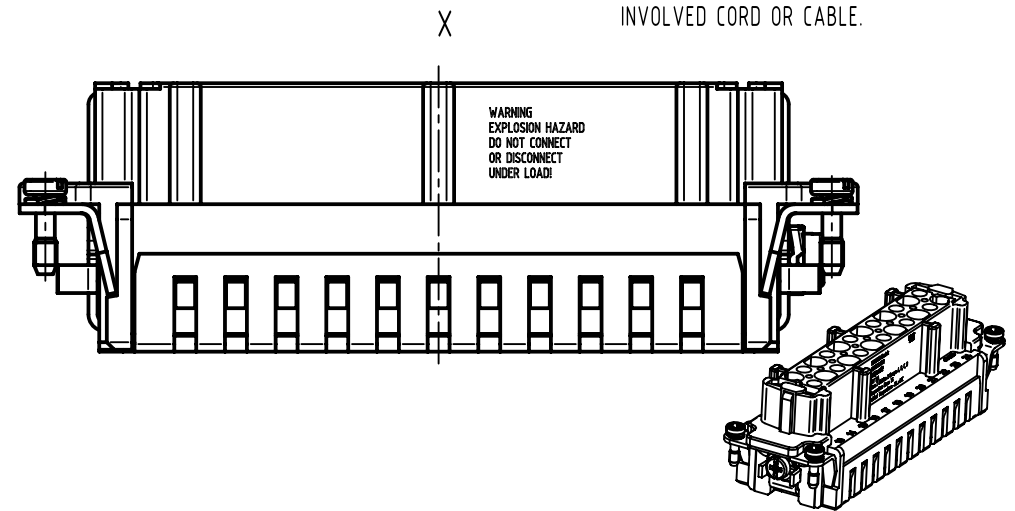
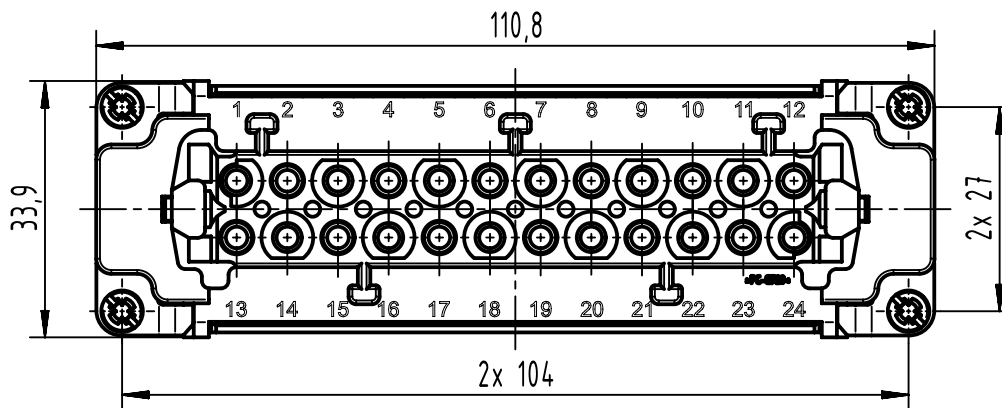
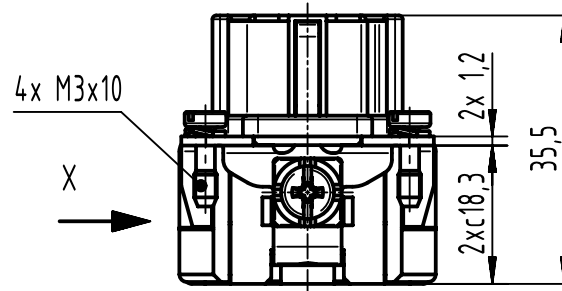
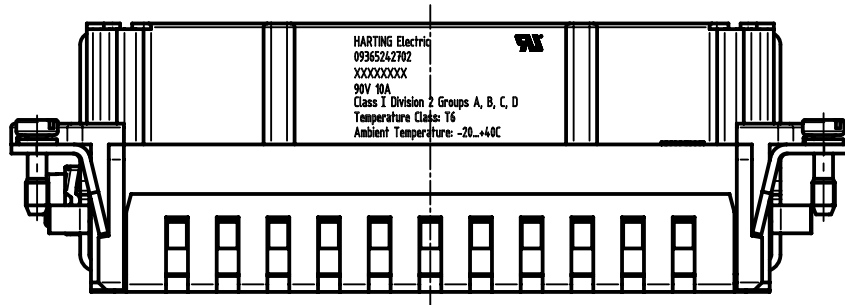


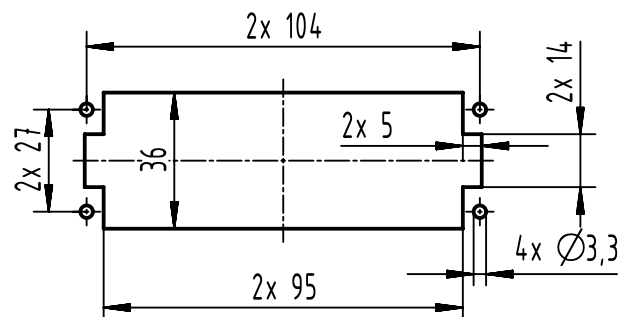
FOR USE WITH HAN 24E CRIMP: AWG 14, 16  
 FOR USE WITH Cable Type:  
 PLTC, PLTC-ER, ITC, ITC-ER, MC, MV, AND TC  
 FOR USE IN CLASS I, DIVISION 2 GROUPS A, B, C AND D  
 HAZARDOUS LOCATIONS OR UNCLASSIFIED LOCATIONS

WARNING  
 EXPLOSION HAZARD  
 DO NOT CONNECT  
 OR DISCONNECT  
 UNDER LOAD!

THE INSTALLATION MUST BE IN ACCORDANCE WITH THE ASSOCIATED LOCATION RESTRICTIONS OF THE NATIONAL ELECTRIC CODE OR CANADIAN ELECTRICAL CODE AS APPLICABLE, INCLUDING ISSUES SUCH AS THE ROUTING, SUPPORT AND LENGTH OF THE INVOLVED CORD OR CABLE.



panel cut out (1:2)



	All Dimensions in mm Original Size DIN A4		Scale 1:1	Free size tol.	Ref.
	All rights reserved Department EL PD		Created by HELLMANN	Inspected by SCHNIEDER	Standardisation
HARTING D-32339 Espelkamp		Title Han 24Ex UL-F-c			Date 2023-01-24
		Type TB	Number 09 36 524 2702		State Final Release
					Doc-Key / ECM-Nr. 100669872/UGD/008/G 500000235316
					Rev. G
					Page 1/1